

## Our Healthcare Providers



### **Dennis W. Murphy, M.D.**

- Undergraduate: University of Florida, Gainesville, Fla.
- Medical School: University of Miami School of Medicine, Miami, Fla.
- Residency: Self Memorial Hospital Family Practice Residency Program, Greenwood, S.C.



### **Christa A. Anderson, FNP-C**

- Undergraduate: University of South Carolina Aiken, Aiken, S.C.
- Graduate School: Augusta University Augusta, Ga.



### **Leisa A. Reynolds, FNP-C**

- Undergraduate: Chamberlain College of Nursing, Downers Grove, IL
- Graduate School: Chamberlain College of Nursing, Downers Grove, IL



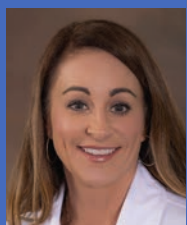
### **Latoya Gibson, AGNP-C**

- Undergraduate: University of SC Upstate, Spartanburg, SC
- Graduate School: Clemson University, Clemson, SC



### **Jessica Simpkins, FNP-C**

- Undergraduate: Chamberlain College of Nursing, Downers Grove, IL
- Graduate School: Walden University, Minneapolis, MN



### **Amy Fletcher, FNP-C**

- Undergraduate: Clemson University, Clemson, SC
- Graduate School: Clemson University, Clemson, SC

## Hours and Appointments

Greenwood and Laurens: Monday – Friday,  
8 a.m. – 5 p.m.

Newberry: Monday, Wednesday and Friday,  
8 a.m. – 5 p.m.

For after hours drug screen services, please contact our  
Greenwood office at (864) 993-6837.

After hours service fee: \$125.00

## Locations

### **Greenwood:**

Self Medical Center Tower Pointe  
105 Vinecrest Court, Suite 300  
Greenwood, S.C. 29646  
Phone: (864) 223-6625  
Fax: (864) 388-2171

### **Laurens:**

Self Medical Center Laurens  
22580 Hwy. 76 East, Suite 200  
Laurens, S.C. 29360  
Phone: (864) 939-1078  
Fax: (864) 725-3808

### **Newberry:**

Self Medical Center Newberry  
2605 Kinard St., Suite 200  
Newberry, S.C. 29108  
Phone: (803) 597-4036  
Fax: (864) 725-3080

Email: [occmed@selfmedicalgroup.org](mailto:occmed@selfmedicalgroup.org)



**SELF REGIONAL**  
HEALTHCARE

OCCUPATIONAL  
HEALTH SERVICES

QSF-MKT-SMG-0014, Revision Level 5, 06/06/2023 Current

**SELF REGIONAL**  
HEALTHCARE

OCCUPATIONAL  
HEALTH SERVICES



**Employee Health Management**



# The Four Pillars of Occupational Health

Offering a broad range of services to improve the health of your team and your business.

## Injury Management

We know you work hard to avoid injuries occurring in your workplace. But, unfortunately, accidents happen. When they do, we're here to help.

Occupational Health Services can manage your employees' care from the time of the injury until they are fully recovered. We understand the importance of providing the very best care to the injured individual to achieve full recovery so they can return to full function as soon as possible.

We also understand the legal and regulatory issues employers face. We will work with you to avoid lost days and when possible, management choices that trigger recording requirements, while at the same time ensuring the injured individual receives the care they need. When duty restrictions are necessary, we will work with you to customize a plan that protects the injured employee and also allows them to return to work in a safe and productive manner.

During the injured employee's recovery period we provide proactive follow up to ensure that all prescribed interventions are provided as planned and that they are recovering as anticipated. We also will order and follow up on advanced therapeutic modalities and specialty consultations when necessary. Other components of injury management include: case management, rehabilitation and work hardening programs. We are available to discuss the management of injured employees whenever you have questions or concerns.

As a part of Self Regional Healthcare, we are able to collaborate with other physicians, specialists and surgeons – providing comprehensive and effective treatment. In addition to our dedicated staff, we have access to the complete array of diagnostic, therapeutic and consultant physician services. We will take full advantage of this access whenever advanced services are needed in caring for your employees.



## Wellness Programs

Programs may be tailored to screening tests and/or intervention for identified risk factors.

- Testing
  - Body mass index and percentage of body fat
  - Waist to hip ratio
  - Blood pressure and pulse
  - Cholesterol, blood glucose, HgbA1c or other laboratory tests as appropriate for your business
- Intervention
  - Presentations on lifestyle changes
  - Assistance in designing exercise regimens for individuals or groups
  - Recommend referral to a primary care physician when warranted
  - Assistance in tailoring incentive programs for your employees to encourage participation in wellness activities

## Near Site Clinics

Near Site Clinics are staffed by mid-level providers and are supervised by our Occupational Health Services Medical Director, Dr. Dennis Murphy. These clinics are located close to your facility, and many are co-located in Family Practice and/or Internal Medicine practices. Near Site Clinics include practices in Edgefield, Laurens, Saluda, Newberry and Greenwood.



## Occupational Health Services

Occupational Health Services comprise those activities that monitor the state of your facility and your employees' health. Many of these activities are linked to regulatory compliance, such as OSHA and EPA requirements.

These include such services as:

- Physical exams
  - Employment
  - DOT
  - Return to duty
  - Executive
- Respiratory Health
  - Pulmonary function tests
  - Respirator fit testing
- Testing for heavy metals and other potential toxic exposures
- Drug testing
  - Random drug testing program and MRO services
  - Pre-employment testing
  - Post-accident, suspicion and for cause testing
  - Includes DOT and non-DOT testing
- Workplace assessment for ergometric and other hazards
- Functional capacity evaluation
  - May include bicycle ergometry or treadmill testing to assess maximum VO2 limits



## Specialty Consultation

We work hard to manage injury cases conservatively. Despite this, some cases do require specialty consultation regarding either diagnosis or management. We have close working relationships with the following providers:

- Optimum Life Center of Self Regional Healthcare
  - Physical therapy
  - Rehabilitation
- Advanced Spine and Neurosurgical Associates
  - Physiatry
  - Neurosurgery
- Orthopaedic Associates of the Lakelands
  - Orthopedics
- Wound Healing Institute
  - Wound management

We can also work with any other consultants based on your preference or any contractual relationships you have.

