

# 2011 Annual Report

**CANCER CENTER**

SELF REGIONAL  
HEALTHCARE

**CANCER CENTER**



# Cancer Committee

## Physician Members

- Gregory Tarasidis, M.D, FACS ..... Otolaryngology, Chairman
- John Funke, III, M.D. .... Radiation Oncology,  
Cancer Liaison Physician
- Kevin Carson, M.D. .... Surgery, Cancer Liaison Physician
- Brian Hunis, M.D. .... Medical Oncology
- Tammy E. Kitchens, M.D. .... Radiology
- Christopher C. Knox, M.D. .... Radiology
- John D. Konsek, M.D. .... Surgery
- F. Greg Mappin, M.D. .... Surgery, Vice President of Medical Affairs
- Gregory McLoughlin, M.D. .... Neurosurgery
- Joanna Sadurski, M.D. .... Medical Oncology
- Robert A. Saul, M.D. .... Medical Genetics
- John M. Sundermann, M.D. .... Pathology
- Robert W. Todd, M.D. .... Palliative Care/Hospice
- W. Preston Turner, III, M.D. .... Urology
- Lena Vician, M.D. .... Medical Oncology
- E. Clint Wood, IV, M.D. .... Radiation Oncology

## Non-Physician Members

- Katie Davis ..... Oncology Navigator, Outreach Coordinator
- Hoyt Dorn .....American Cancer Society
- Beth Fain ..... Patient Financial Advocate
- Heather Fuller, CTR .....Coordinator, Clinical Oncology Data
- Kelly Hawthorne, RN ..... Oncology Research/Clinical Trials
- Rebekah James ..... Manager, Radiation Oncology
- Kendra Keeney, B.S. ....Administrative Director, Oncology Services
- Kathy Lindley, CTR ..... Analyst, Clinical Oncology Data
- Dee McLane ..... Vice President of Professional Services
- Julie McDade ..... Manager, Medical Oncology
- Kristina Nelson, PharmD ..... Coordinator, Oncology Pharmacy
- Joannie Strickland ..... Quality Management Services
- Cyndi Thorpe ..... Chaplain
- Elizabeth White, RN, ONC .....Lead Nurse Oncology Clinician
- Tracie Williamson, RN ..... Nurse Oncology Clinician

## References

- Cancer Facts and Figures, 2011, American Cancer Society
- IMPAC\_Cancer Information Reference File
- Self Regional Healthcare Cancer Registry Data

## Contact Us

Self Regional Cancer Center  
Oncology Navigator  
(864) 725-SELF



## Leadership Summaries

### Executive Summary



The past year has been full of growth and opportunity for the Cancer Center at Self Regional Healthcare. The completion of the new 40,000 square foot facility makes cancer care more convenient for our patients and families as all services are finally together in one location. In addition to Medical and Radiation Oncology departments, the center has its own Laboratory and Infusion Center.

The staff of the Infusion Center also administers other injectable or intravenous therapies that were previously available in our Outpatient Infusion Treatment Center on the fourth floor of the hospital.

The Radiation Oncology department continues to provide cutting edge technology through the leadership of Dr. John Funke, Medical Director of Radiation Oncology. In August, Dr. Funke was joined by radiation oncologist Dr. Clint Wood. Also, as part of the new center, our 2100C linear accelerator was replaced with a Varian Trilogy which offers RapidArc. This technology can reduce treatment times to less than two minutes. This accelerator can also perform stereotactic radiotherapy and stereotactic body radiotherapy.

Our community outreach program continues to expand with a partnership with the Free Medical Clinic to offer breast screenings to uninsured patients in Greenwood, Abbeville and McCormick counties. Our strong relationship with the Susan G. Komen Foundation continues. As a 2011 Komen grant recipient, we performed 200 screening mammograms, 60 diagnostic mammograms, 31 ultrasounds and 6 biopsies to underinsured women.

The Self Regional Cancer Center continues to position itself as an outstanding regional comprehensive cancer center. Resources are available through the Cancer Center to equal similar centers throughout the Southeast.

Kendra Keeney, B.S.  
Administrative Director, Cancer Services

### Cancer Committee Chairman Report



The Cancer program at Self Regional experienced a very exciting year in 2011. In April, with the opening of a state-of-the-art facility, we were able to enhance our support offerings to cancer patients and their families. The new center includes a Patient Learning Center where patients can access educational materials and also functions as a location for the various support groups at the center. The Gardenside

Café offers patients, visitors and employees healthy, quick snacks and meals. Designed by Nature, a well-respected Greenwood fixture, is now part of Self Regional and is housed in the Cancer Center. This boutique provides patients with convenient access to prostheses, mastectomy bras and lymphedema sleeves, from certified fitters.

In late summer, the medical oncologists, radiation oncologists and neurosurgeons began a collaboration to see brain tumor patients at the center's multidisciplinary clinic. Currently held every Friday morning, patients may be seen by all three specialties, if needed, to facilitate the process and allow for more patient convenience. Based on the success of this program, we are likely to expand into a thoracic multidisciplinary clinic as well as a breast cancer clinic in the coming year.

In October, "Pretty in Pink" was held in the center as a breast cancer awareness and educational event. More than 250 women attended the event which included a fashion show, educational booths and "mini" massages. Also this fall, the Cancer Center partnered with the American Cancer Society to begin, "Man to Man," a prostate cancer support group. The initial meetings of the group have been very positive and we look forward to seeing this program grow in the future. "Man to Man" is the third support group offered by the center, in addition to a general support group, "Self Survivors," and our breast cancer support group, "Women in Pink."

This illustrates just some of the accomplishments the Cancer Center achieved throughout its first year. We look forward to more advances and more services for the patients of the Lakelands region as we continue to work to bring advanced care closer to home.

Gregory Tarasidis, M.D., FACS  
Chairman, Cancer Committee



## Leadership Summaries' continued



A Place ...

### Radiation Oncology 2011 Summary



2011 has been a great year for the Radiation Oncology department. Our new space in the center allowed us to expand and bring new technology to the Lakelands region. In addition to a High Dose Rate (HDR) suite for performing brachytherapy procedures, the construction project also saw the installation of a new GE RT-16 CT machine. This allows us to perform patient simulations using a CT scanner

in the department, rather than doing the simulation in two separate departments. We are now able to schedule patients in a more timely manner and help get them underway with treatment in an expedited manner.

Our new linear accelerator, a Varian Trilogy, offers on-board imaging, Cone Beam CT, and RapidArc. RapidArc is a technology that can drastically reduce patients' treatment times to as little as 75-90 seconds, depending on the cancer site. This is a huge benefit for patients, as it decreases the amount of time they are on the treatment table and the likelihood of movement, ensuring a more accurate treatment. This accelerator also allows us to perform Stereotactic Body Radiotherapy, a treatment for patients with small lung lesions who previously had to be referred out of the Lakelands area.

The department expanded by adding a fifth radiation therapist, a second Registered Nurse and a second radiation oncologist. Dr. Clint Wood joined us on August 1, 2011, and brought with him knowledge and experience of some of the newer radiation therapy techniques such as Stereotactic Body Radiotherapy, prone breast treatments and external beam accelerated radiation treatment. We are fortunate to have Dr. Wood and his expertise join us.

In 2011, more than 325 patients were treated using radiation therapy and we look forward to serving the patients of the Lakelands area in the years to come.

John Funke, III, MD  
Medical Director  
Radiation Oncology

### Medical Oncology 2011 Summary



The expansion into the new Cancer Center has been extremely beneficial for our medical oncology patients. We have three medical oncologists on staff, Dr. Lena Vician, Dr. Brian Hunis, and myself. In the new center, we nearly doubled our exam rooms from 8 to 15 which is very valuable given the average of 850 patient visits monthly for oncology and hematology patients.

Also, the expanded space of the new center allowed the hospital to combine outpatient infusion with chemotherapy. In addition to providing chemotherapy, we treat patients with blood and blood products as well as other intravenous therapies. There are 32 available treatment spaces in the infusion area, a vast improvement over the 12-18 treatment spaces we previously had. We see about 740 patients in our infusion suites each month. The staff includes five Oncology Certified Nurse Clinicians (OCN).

The new center has an in-house pharmacy for infusion. Staffed by two oncology pharmacists and two pharmacy technicians, this allows us to create drug mixtures in the center and involve the pharmacist as an integral part of the patient's healthcare team.

The Cancer Center also has a dedicated lab which is CLIA and TJC accredited. The lab performs hematology and chemistry tests on patients and offers a convenient alternative to patients who now can visit one location for all of their needs.

We are very proud of the new center and the staff who works here. Having state-of-the-art space and equipment, in a patient-centered environment, makes this difficult journey easier on our patients and allows us to fulfill the hospital's mission.

Joanna Sadurski, MD  
Medical Director  
Medical Oncology



## Overview of Services

### About Cancer Services

In the battle against cancer, the news has never been better. Advances in diagnoses and treatments have made facing the disease a different experience than just a few years ago.

Surgery, chemotherapy and radiation treatments are more precisely targeted than ever. People with the most common types of cancer – breast, prostate, lung, colon and bladder – as well as many other cancers, can receive the care they need close to home at the Self Regional Cancer Center.

We have put all of the elements in place for highly effective, multi-disciplinary treatment. Our approach brings together experienced physicians and staff, a nurturing environment, sophisticated technology and compassionate care essential to quality cancer treatment.

### Oncology Services

Self Regional offers advanced cancer care, including medical, radiation and surgical oncology.

#### Medical Oncology

Physicians who specialize in hematology and oncology are medical oncologists. They are specially trained in treating cancer patients with chemotherapy, as well as treating patients who have blood disorders. Chemotherapy is provided in our Outpatient Infusion Center. Oncology-certified nurses administer advanced treatments in a supportive, comfortable setting that looks out into a Healing Garden.

#### Radiation Oncology

One of the most powerful tools for fighting cancer is radiation therapy. At Self Regional, our Radiation Oncology department provides a wide spectrum of radiotherapy services. We are fully staffed with specialists, including radiation oncologists, physicists, a dosimetrist, radiation therapists and oncology nurses.

#### Surgical Oncology

Surgery frequently forms an important component of cancer treatment, and is often used in conjunction with radiation therapy or chemotherapy. Our board-certified, specialized surgeons are prepared to help those diagnosed with cancer who can benefit from surgery.

### Support Services

We realize cancer is more than a medical diagnosis. In order to meet all of our patients' needs, we provide the following services:

- Nutritional counseling
- Social services
- Financial counseling
- Genetic counseling
- Pastoral care
- Rehabilitative services
- Navigation Services

### Cancer Registry Report



Self Regional's cancer program is approved by the American College of Surgeons (ACoS) Commission on Cancer (CoC) and must collect, maintain, and analyze data on cancer patients diagnosed and/or treated here. The information collected by the Cancer Registry includes demographics, first course treatment, staging (extent of disease) and follow-up information. Patients are also followed for life in

accordance with the American College of Surgeons. The Registry staff coordinates a weekly Multidisciplinary Cancer Conference which includes physicians from radiology, pathology, medical oncology, radiation oncology, internal medicine, urology, gastroenterology, and surgical specialties. These conferences are open to all physicians. The staff coordinates Quarterly Cancer Committee meetings and monthly task force meetings to ensure all ACoS standards are being met.

The Cancer Registry employs two full-time team members, Heather Fuller, CTR, and Kathy Lindley, CTR, and a part-time employee, Carolyn Leslie, CTR.

All registry staff must participate in educational activities throughout the year to stay current with the latest developments in the cancer community. Recently we began an exciting new initiative: Rapid Quality Reporting System (RQRS), a reporting and quality improvement tool that gives real time assessment of hospital-level adherence to NQF-endorsed quality of cancer care measures for breast and colorectal cancers. This is a valuable tool for the quality of cancer care the patient receives. RQRS was developed to assist CoC-accredited cancer programs in promoting evidenced-based cancer care at the local level. It is a web-based, systematic data collection and reporting system that advances evidenced-based treatment through a prospective alert system for anticipated care which supports care coordination required for breast and colorectal cancer patients.

Data from the Registry was analyzed to determine the anticipated increase in cancer cases in the Lakelands area and supported the construction of our new center. The Cancer Center, its physicians and staff play a very important role in the life of a cancer patient and the registry is extremely proud to contribute to this role through maintaining quality data.

Heather Fuller, CTR  
Clinical Oncology Data Coordinator

For Peace of Mind.



# Statistics

## Overview of 2011 Statistics

The Self Regional Healthcare Oncology Data Management department (Cancer Registry) collected 676 new cancer cases in 2011. Of the total number, 95 percent were diagnosed and/or treated at Self Regional Healthcare.

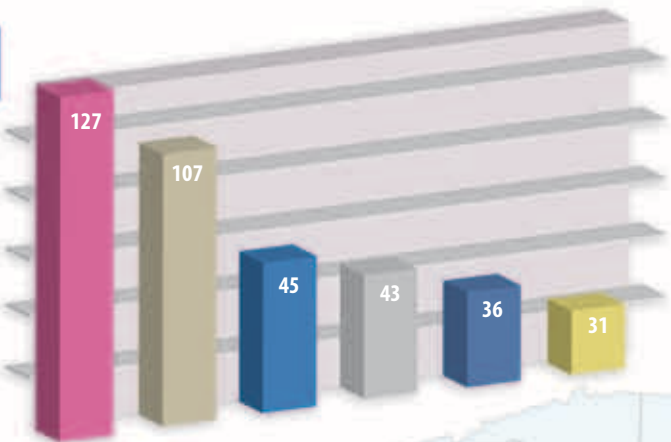
Here is a brief overview of the new cases diagnosed and/or treated at Self Regional Healthcare:

- The six major sites of cancer diagnosed at Self Regional Healthcare are Breast 127, Lung 107, Prostate 45, Hematopoietic Cancers 43, Colon 36, and Bladder 31.
- Patients ranged in age from 18-97 years, with the mean age of 62 years.

- In 2011, Self Regional saw an increase in the volume of female patients (378) versus male patients (298).
- Approximately 70 percent of patients were Caucasian and 28 percent African American, which is consistent with 2010 data. The remaining 2 percent of patients were Chinese, Japanese, Vietnamese or other.
- 51 percent of patients diagnosed lived in Greenwood County, 17 percent in Laurens County, 13 percent in Abbeville County and 9 percent in McCormick County. The remaining 10 percent live in Saluda, Newberry, Anderson, Edgefield, Aiken or other counties within South Carolina. There were also some patients diagnosed and/or treated from Georgia.

## Self Regional Healthcare's Top 6 Primary Sites

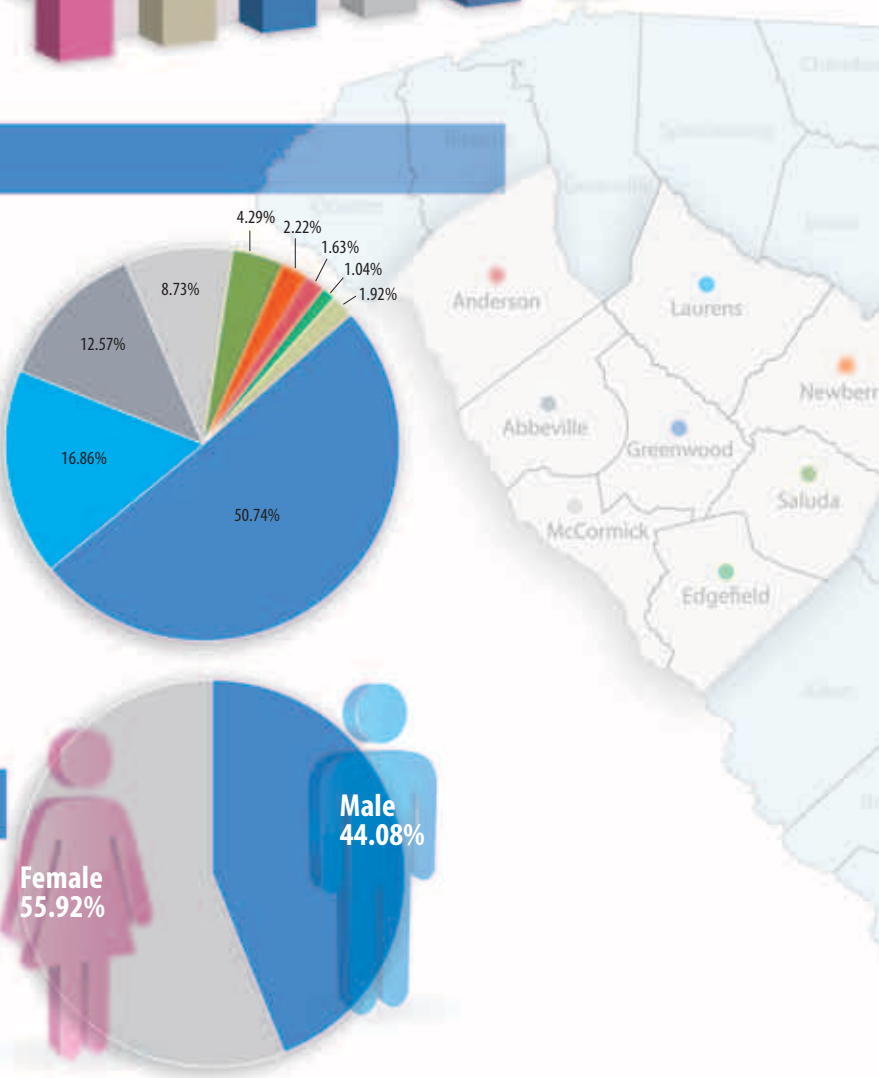
Site	Number of Diagnosis
Breast	127
Lung	107
Prostate	45
Hematopoietic Diseases	43
Colon	36
Bladder	31



## County by Diagnosis

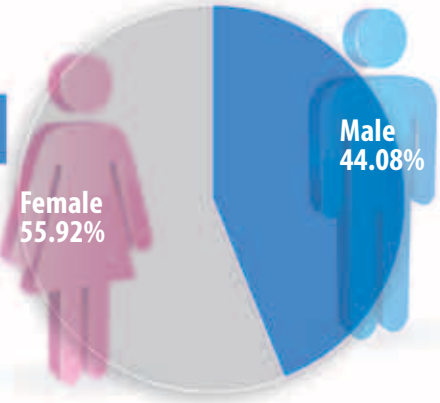
### 1st Contact Year and Class of Case: A

County by Diagnosis	Count	Percent
SC-Greenwood	343	50.74%
SC-Laurens	114	16.86%
SC-Abbeville	85	12.57%
SC-McCormick	59	8.73%
SC-Saluda	29	4.29%
SC-Newberry	15	2.22%
SC-Anderson	11	1.63%
SC-Edgefield	7	1.04%
Other	13	1.92%
Total	676	100.00%



## Gender-based Percentage

More women than men were diagnosed with cancer in 2011, with the Registry tracking almost 56% of all cases as female. The number one diagnosis was breast cancer. Men accounted for just 44% of all cancer diagnoses.



For Hope.



## Primary Site Distribution

Primary Site	Male	Female	Analytic	Stg 0	Stg I	Stg II	Stg III	Stg IV	N/A
<strong>ORAL CAVITY &amp; PHARYNX</strong>	<strong>8</strong>	<strong>6</strong>	<strong>14</strong>	<strong>0</strong>	<strong>0</strong>	<strong>2</strong>	<strong>2</strong>	<strong>10</strong>	<strong>0</strong>
Tongue	1	2	3	0	0	0	0	3	0
Salivary Glands	0	1	1	0	0	0	1	0	0
Floor of Mouth	2	0	2	0	0	1	0	1	0
Gum & Other Mouth	1	2	3	0	0	1	0	2	0
Nasopharynx	1	0	1	0	0	0	1	0	0
Tonsil	2	1	3	0	0	0	0	3	0
Hypopharynx	1	0	1	0	0	0	0	1	0
<strong>DIGESTIVE SYSTEM</strong>	<strong>47</strong>	<strong>52</strong>	<strong>99</strong>	<strong>1</strong>	<strong>22</strong>	<strong>22</strong>	<strong>27</strong>	<strong>24</strong>	<strong>3</strong>
Esophagus	11	2	13	0	2	2	7	2	0
Stomach	4	1	5	0	1	1	1	2	0
Small Intestine	0	4	4	0	1	0	2	1	0
Colon Excluding Rectum	17	19	36	1	7	11	10	7	0
Cecum	5	4	9	1	1	2	4	1	0
Appendix	0	3	3	0	0	2	0	1	0
Ascending Colon	3	4	7	0	3	2	0	2	0
Hepatic Flexure	2	1	3	0	0	2	1	0	0
Transverse Colon	0	4	4	0	1	1	2	0	0
Splenic Flexure	1	0	1	0	0	0	1	0	0
Descending Colon	2	0	2	0	1	1	0	0	0
Sigmoid Colon	3	2	5	0	1	1	2	1	0
Large Intestine, NOS	1	1	2	0	0	0	0	2	0
Rectum & Rectosigmoid	6	8	14	0	6	2	4	2	0
Rectosigmoid Junction	2	3	5	0	0	2	2	1	0
Rectum	4	5	9	0	6	0	2	1	0
Anus, Anal Canal & Anorectum	0	3	3	0	1	1	1	0	0
Liver & Intrahepatic Bile Duct	4	1	5	0	2	1	0	1	1
Gallbladder	2	1	3	0	0	0	1	1	1
Pancreas	3	10	13	0	2	4	0	6	1
Peritoneum, Omentum & Mesentery	0	3	3	0	0	0	1	2	0
<strong>RESPIRATORY SYSTEM</strong>	<strong>68</strong>	<strong>52</strong>	<strong>120</strong>	<strong>2</strong>	<strong>13</strong>	<strong>16</strong>	<strong>31</strong>	<strong>56</strong>	<strong>2</strong>
Nose, Nasal Cavity & Middle Ear	0	1	1	0	0	0	0	0	1
Larynx	8	4	12	1	2	2	4	3	0
Lung & Bronchus	60	47	107	1	11	14	27	53	1
<strong>BONES &amp; JOINTS</strong>	<strong>1</strong>	<strong>1</strong>	<strong>2</strong>	<strong>0</strong>	<strong>0</strong>	<strong>1</strong>	<strong>0</strong>	<strong>0</strong>	<strong>1</strong>
Bones & Joints	1	1	2	0	0	1	0	0	1
<strong>SOFT TISSUE</strong>	<strong>2</strong>	<strong>1</strong>	<strong>3</strong>	<strong>0</strong>	<strong>0</strong>	<strong>0</strong>	<strong>0</strong>	<strong>3</strong>	<strong>0</strong>
Soft Tissue (including Heart)	2	1	3	0	0	0	0	3	0
<strong>SKIN EXCLUDING BASAL &amp; SQUAMOUS</strong>	<strong>8</strong>	<strong>7</strong>	<strong>15</strong>	<strong>1</strong>	<strong>5</strong>	<strong>4</strong>	<strong>2</strong>	<strong>1</strong>	<strong>2</strong>
Melanoma – Skin	8	7	15	1	5	4	2	1	2
<strong>BASAL &amp; SQUAMOUS SKIN</strong>	<strong>1</strong>	<strong>0</strong>	<strong>1</strong>	<strong>0</strong>	<strong>0</strong>	<strong>1</strong>	<strong>0</strong>	<strong>0</strong>	<strong>0</strong>
Basal/Squamous cell carcinomas of Skin	1	0	1	0	0	1	0	0	0
<strong>BREAST</strong>	<strong>1</strong>	<strong>126</strong>	<strong>127</strong>	<strong>21</strong>	<strong>59</strong>	<strong>19</strong>	<strong>15</strong>	<strong>10</strong>	<strong>3</strong>
Breast	1	126	127	21	59	19	15	10	3
<strong>FEMALE GENITAL SYSTEM</strong>	<strong>0</strong>	<strong>24</strong>	<strong>24</strong>	<strong>4</strong>	<strong>8</strong>	<strong>3</strong>	<strong>3</strong>	<strong>2</strong>	<strong>4</strong>
Cervix Uteri	0	3	3	0	2	0	1	0	0
Corpus & Uterus, NOS	0	13	13	1	6	2	0	1	2
Corpus Uteri	0	11	11	1	5	2	0	0	3
Uterus, NOS	0	2	2	0	1	0	0	1	0
Ovary	0	3	3	0	0	0	2	0	1
Vagina	0	1	1	1	0	0	0	0	0
Vulva	0	4	4	2	0	1	0	1	0

Primary Site	Male	Female	Analytic	Stg 0	Stg I	Stg II	Stg III	Stg IV	N/A
<strong>MALE GENITAL SYSTEM</strong>	<strong>46</strong>	<strong>0</strong>	<strong>46</strong>	<strong>0</strong>	<strong>15</strong>	<strong>23</strong>	<strong>0</strong>	<strong>8</strong>	<strong>0</strong>
Prostate	45	0	45	0	14	23	0	8	0
Testis	1	0	1	0	1	0	0	0	0
<strong>URINARY SYSTEM</strong>	<strong>41</strong>	<strong>14</strong>	<strong>55</strong>	<strong>15</strong>	<strong>20</strong>	<strong>9</strong>	<strong>3</strong>	<strong>8</strong>	<strong>0</strong>
Urinary Bladder	24	7	31	14	4	8	0	5	0
Kidney & Renal Pelvis	16	5	21	1	15	0	2	3	0
Ureter	1	2	3	0	1	1	1	0	0
<strong>EYE &amp; ORBIT</strong>	<strong>1</strong>	<strong>0</strong>	<strong>1</strong>	<strong>0</strong>	<strong>1</strong>	<strong>0</strong>	<strong>0</strong>	<strong>0</strong>	<strong>0</strong>
Eye & Orbit	1	0	1	0	1	0	0	0	0
<strong>BRAIN &amp; OTHER NERVOUS SYSTEM</strong>	<strong>11</strong>	<strong>16</strong>	<strong>27</strong>	<strong>0</strong>	<strong>0</strong>	<strong>0</strong>	<strong>0</strong>	<strong>0</strong>	<strong>27</strong>
Brain	5	6	11	0	0	0	0	0	11
Cranial Nerves Other Nervous System	6	10	16	0	0	0	0	0	16
<strong>ENDOCRINE SYSTEM</strong>	<strong>7</strong>	<strong>32</strong>	<strong>39</strong>	<strong>0</strong>	<strong>22</strong>	<strong>2</strong>	<strong>0</strong>	<strong>0</strong>	<strong>15</strong>
Thyroid	2	22	24	0	22	2	0	0	0
Other Endocrine Including Thymus	5	10	15	0	0	0	0	0	15
<strong>LYMPHOMA</strong>	<strong>26</strong>	<strong>20</strong>	<strong>46</strong>	<strong>0</strong>	<strong>14</strong>	<strong>5</strong>	<strong>8</strong>	<strong>17</strong>	<strong>2</strong>
Hodgkin Lymphoma	3	0	3	0	1	0	0	2	0
Hodgkin - Nodal	1	0	1	0	1	0	0	0	0
Hodgkin - Extranodal	2	0	2	0	0	0	0	2	0
Non-Hodgkin Lymphoma	23	20	43	0	13	5	8	15	2
NHL - Nodal	14	9	23	0	5	5	5	8	0
NHL - Extranodal	9	11	20	0	8	0	3	7	2
<strong>MYELOMA</strong>	<strong>6</strong>	<strong>4</strong>	<strong>10</strong>	<strong>0</strong>	<strong>0</strong>	<strong>0</strong>	<strong>0</strong>	<strong>0</strong>	<strong>10</strong>
Myeloma	6	4	10	0	0	0	0	0	10
<strong>LEUKEMIA</strong>	<strong>9</strong>	<strong>9</strong>	<strong>18</strong>	<strong>0</strong>	<strong>0</strong>	<strong>0</strong>	<strong>0</strong>	<strong>0</strong>	<strong>18</strong>
Lymphocytic Leukemia	5	5	10	0	0	0	0	0	10
Acute Lymphocytic Leukemia	1	0	1	0	0	0	0	0	1
Chronic Lymphocytic Leukemia	3	5	8	0	0	0	0	0	8
Other Lymphocytic Leukemia	1	0	1	0	0	0	0	0	1
Myeloid & Monocytic Leukemia	4	4	8	0	0	0	0	0	8
Acute Myeloid Leukemia	3	2	5	0	0	0	0	0	5
Chronic Myeloid Leukemia	1	2	3	0	0	0	0	0	3
<strong>MESOTHELIOMA</strong>	<strong>1</strong>	<strong>1</strong>	<strong>2</strong>	<strong>0</strong>	<strong>1</strong>	<strong>0</strong>	<strong>0</strong>	<strong>1</strong>	<strong>0</strong>
Mesothelioma	1	1	2	0	1	0	0	1	0
<strong>KAPOSI SARCOMA</strong>	<strong>0</strong>	<strong>1</strong>	<strong>1</strong>	<strong>0</strong>	<strong>0</strong>	<strong>0</strong>	<strong>0</strong>	<strong>0</strong>	<strong>1</strong>
Kaposi Sarcoma	0	1	1	0	0	0	0	0	1
<strong>MISCELLANEOUS</strong>	<strong>14</strong>	<strong>12</strong>	<strong>26</strong>	<strong>0</strong>	<strong>0</strong>	<strong>0</strong>	<strong>0</strong>	<strong>0</strong>	<strong>26</strong>
Miscellaneous	14	12	26	0	0	0	0	0	26
<strong>Total</strong>	<strong>298</strong>	<strong>378</strong>	<strong>676</strong>	<strong>44</strong>	<strong>180</strong>	<strong>107</strong>	<strong>91</strong>	<strong>140</strong>	<strong>114</strong>

Analytic cases were first diagnosed and/or received all or part of first course of treatment at Self Regional Healthcare. Stage is based on Best Collaborative/AJCC stage. The numbers in the charts are based on total numbers of tumors for the year 2011.

For Inspiration.



## 2011 Lung & Bronchus Study

### Lung & Bronchus Site Study

#### Overview:

More than half of the 107 patients diagnosed with lung cancer by Self Regional were already at Stage IV. On a national average, patients diagnosed with Stage IV lung cancer who undergo treatment have a life expectancy of just 8.5 months. Self Regional is committed to developing community outreach programs, which emphasizes screenings, smoking cessation and education, and invests in specialized technology and resources for treatment.

#### Statistical Information:

In South Carolina, it was projected that about 3,900 cases of lung cancer would be diagnosed in 2011. New lung cases diagnosed at Self Regional Healthcare accounted for about 16% of the total of new cancer cases diagnosed in 2011.

2011 Facts and Figures	All Cancers	Lung Cases
United States	1,596,670	221,130 (14%)
South Carolina	25,210	3,900 (15%) **
Self Regional Healthcare	676	107 (16%)

\*\*Self Regional Healthcare diagnosed 3% of the total estimated lung cancers in South Carolina. Lung cancer ranks as the second most diagnosed cancer at Self Regional Healthcare.

### Types of Lung Cancer

Lung Cancer is grouped into 2 categories:

1. Non-Small Cell Cancer (NSCLC)
2. Small Cell Lung Cancer (SCLC)

**Non Small Cell (NSCLC)** represents about 80 percent of all lung cancers. This type of cancer grows more slowly, but may spread to lymph nodes and other organs such as liver, opposite lung, brain, and/or bones.

Non-small cell lung cancers are assigned a stage from I to IV in order of severity:

- In Stage I, the cancer is confined to the lung.
- In Stages II and III, the cancer is confined to the lung, and/or possibly, the lymph nodes.
- In Stage IV cancer has spread outside of the lung to other parts of the body.

**Small Cell Lung Cancer (SCLC)** accounts for about 20 percent of lung cancers and is known to grow and spread more rapidly than NSCLC. This type of cancer often spreads to the brain, as well as the opposite lung, liver, and bones, and has a high reoccurrence rate.

This type of lung cancer responds well to chemotherapy and radiation. Prophylactic cranial radiation is a treatment option for patients developing this small cell lung cancer. (This is treatment to the brain to help prevent metastatic brain disease).

Small cell lung cancers (SCLC) are staged using a two-tiered system:

- Limited stage (LS) SCLC refers to cancer that is confined to its area of origin in the lung and lymph nodes.
- In extensive-stage (ES) SCLC, the cancer has spread beyond the lung to other parts of the body.

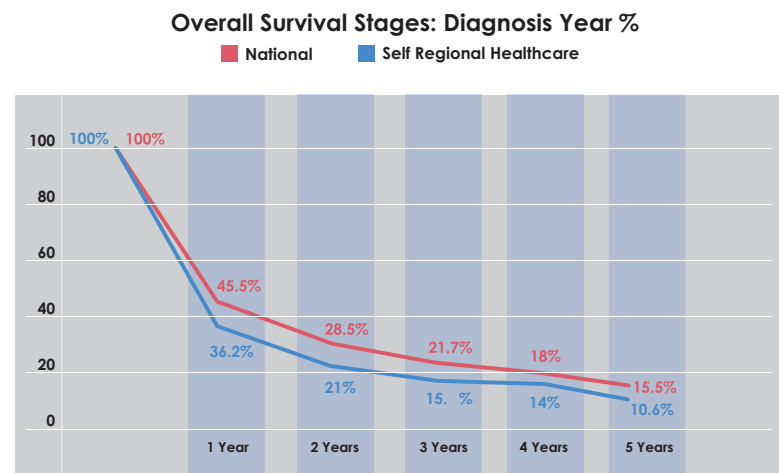
#### Looking Forward:

To assist with the treatment and diagnosis of lung cancer patients, Self Regional Healthcare is planning to invest in specialized technology, physician consultation and emphasis and community awareness campaigns.

**Thoracic/Lung Tumor Board:** Beginning in May 2012, Self Regional formed a Thoracic/Lung Tumor Board, which meets to discuss treatment planning for lung cancer patients. The tumor board represents a multi-disciplinary group, including pulmonologists, thoracic surgeons, radiologists, pathologists, and other specialists.

**Technology:** To assist with bronchoscopy procedures, Self Regional is planning to purchase an endobronchial ultrasound scope (EBUS), which would provide additional information to diagnose or determine the stage of a lung cancer. This relatively new technique allows doctors to view regions of the lungs and surrounding chest area that have traditionally required more invasive surgical procedures.

**Community Outreach:** Self Regional is in the process of planning its community outreach strategy, with a goal of increasing awareness and early detection for lung cancer. The strategy will include screening events for lung cancer, additional smoking cessation classes and education about the signs and symptoms of lung cancer.



Overall survival stages: 0-4 at national vs. SRH is above. Source: National Cancer Database by jbanasiak@facs.org

For You.



## News Briefs

### News Briefs

## Designed by Nature



Patsy Taylor

### Cancer Center Offers Specialty Boutique

Patsy Taylor has been helping female cancer patients in the Lakelands region for more than 15 years with a specialized boutique, Designed by Nature. When the new Self Regional Cancer Center opened, Patsy and the boutique found a new—and convenient—home for those who need items such as mastectomy bras, lymphedema sleeves and wigs.

Designed by Nature offers certified fitters to assist women who have undergone a mastectomy or lumpectomy and accepts many types of insurance for medical-related products.

In addition to the supportive care items, the boutique includes a selection of fashion accessories and jewelry. To learn more, call the shop at (864) 538-4604.



### Support Care Services

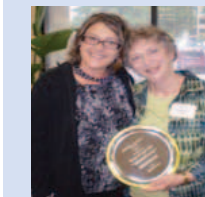
**Self Regional offers three different support groups for cancer survivors:**

- Women in Pink (breast cancer survivors)
- Man to Man (prostate cancer survivors)
- Self Survivors (all types of cancer)

**Support groups meet on a monthly basis and are facilitated by staff from the Cancer Center. To find a support group, contact Oncology Navigation at (864) 725-5977.**



### Recognizing Excellence



Cancer Center team member Carolyn Leslie, CTR, pictured with Clinical oncology Data Coordinator Heather Fuller, was named the 2011 winner of the Frances W. Wheeler award at the South Carolina Cancer Registrars Association (SCCRA) annual meeting.

Mrs. Leslie, CTR, began Self Regional Healthcare's Cancer Registry more than 25 years ago.

The award recognizes outstanding individuals who support the mission, values and principles of the SCCRA in service, education or research.

### Cancer Center Opening Event

Dedicating a Place for Hope, Caring and Comfort, Self Regional Healthcare held a formal dedication ceremony for the new Cancer Center on April 12, 2011, with survivor Lynn Johnson cutting the ribbon before a crowd of about 400 people.



Tours of the new facility were offered with cancer center staff talking about the technology and features of the Cancer Center.



Hope.  
Caring.  
Comfort.





SELF REGIONAL  
HEALTHCARE  
CANCER CENTER

1325 Spring Street • Greenwood, South Carolina 29646-3875 • (864) 725-7100