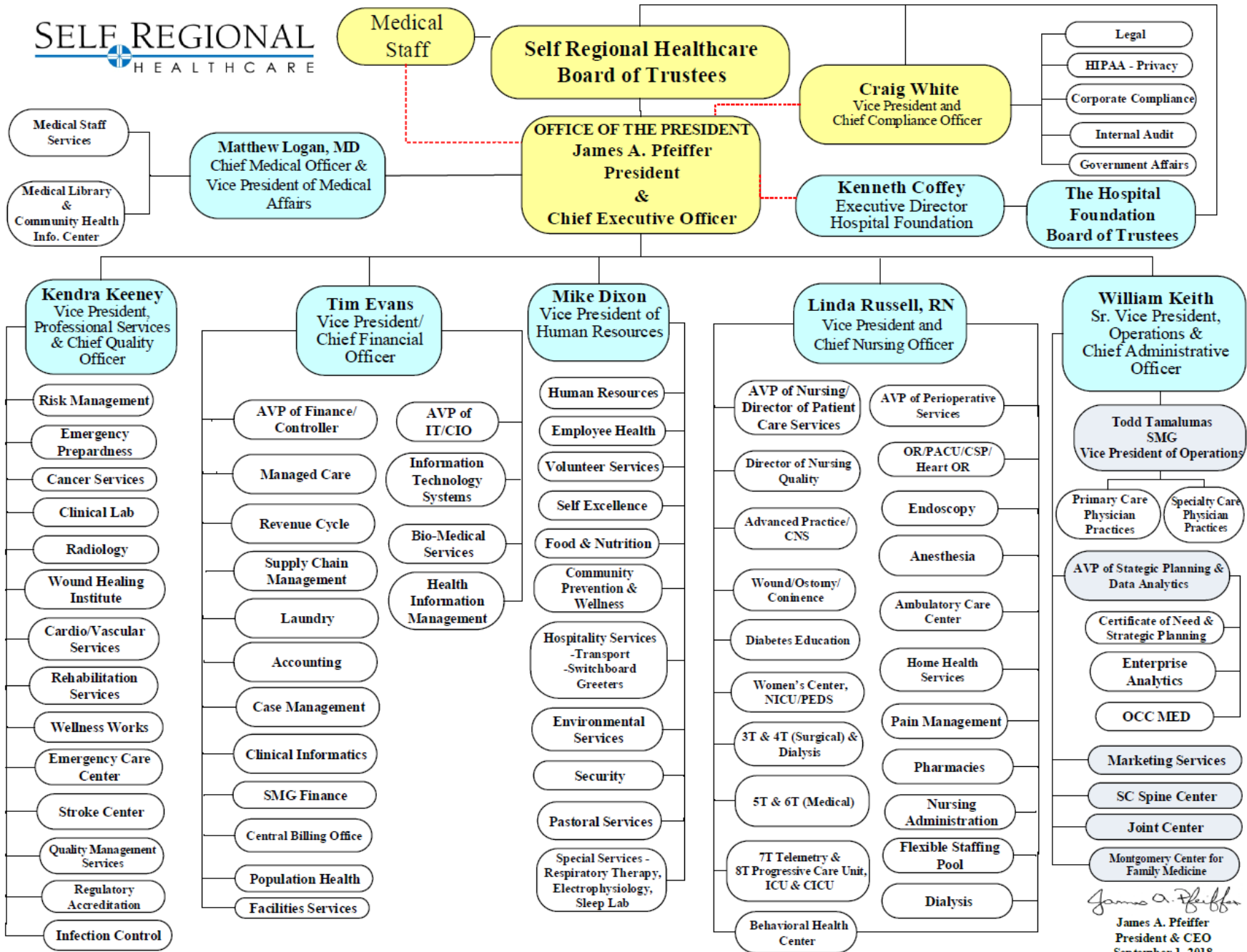


Welcome to Orientation



Healthcare Connected !



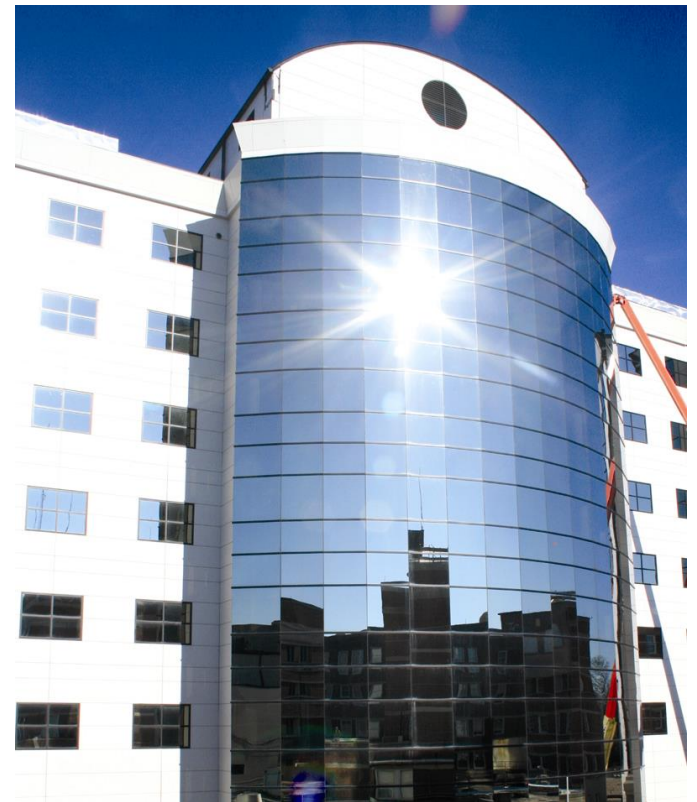
James A. Pfeiffer

James A. Pfeiffer
President & CEO
September 1, 2018



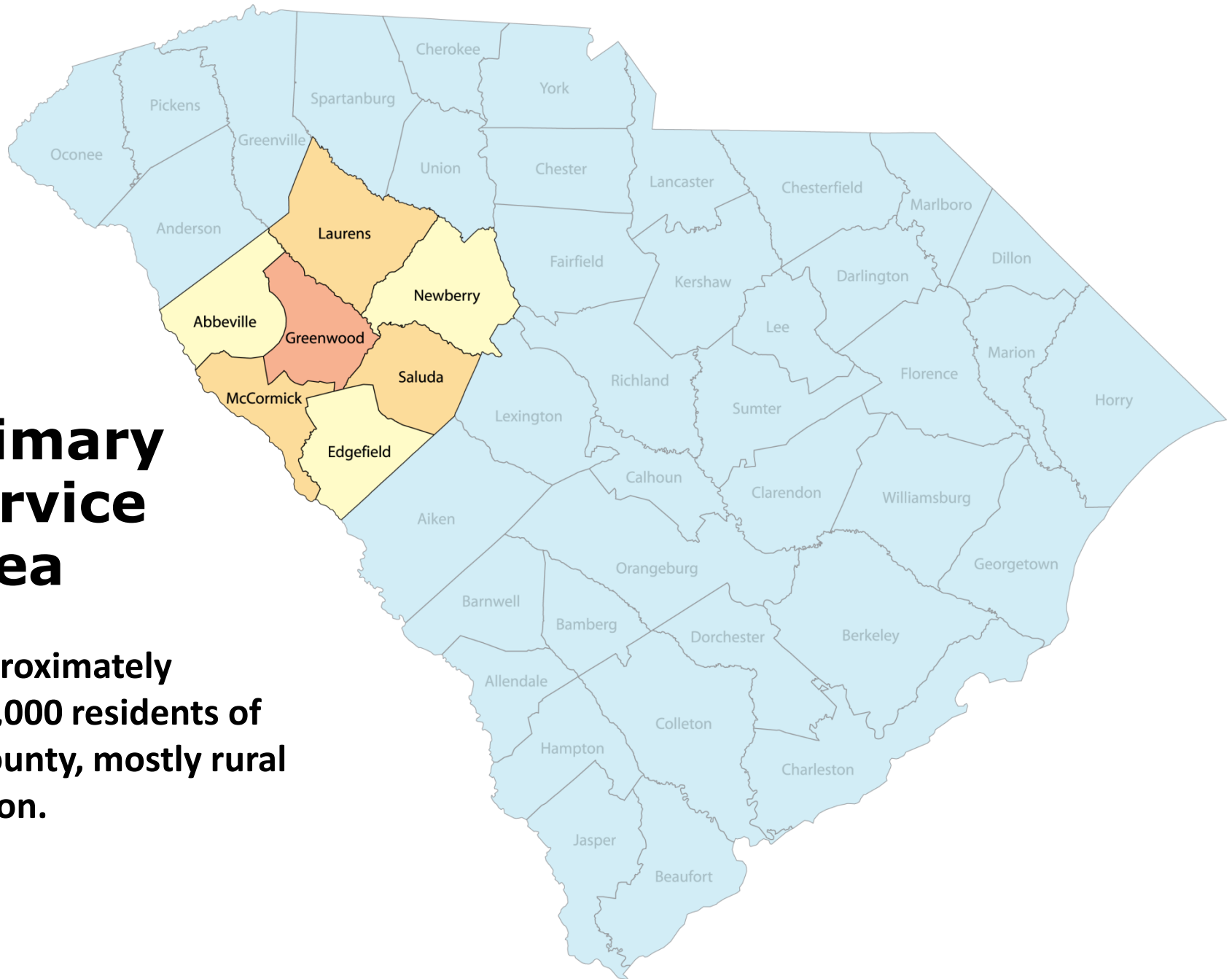
Serving the Lakelands of South Carolina

- **Independent, Not for Profit**
- **Serve as Destination or Referral Hospital for Advanced Care**
- **358 Licensed Beds**
- **Over 2,600 Team Members**
- **200+ Physicians on Active Medical Staff in over 40 specialties**



Primary Service Area

Approximately 300,000 residents of 7-county, mostly rural region.



Mission and Vision

Mission

Our hearts, hands and minds are leading our communities to better health.

Vision

The care, experience and value we provide will be superior for all the communities we are entrusted to serve.

Our Purpose

*Always Create The
Best Experience*

Our Values

Integrity

Compassion

Respect

Quality

We will deliver quality patient care with integrity, compassion and respect.