

Welcome to Orientation Emergency Plans



Healthcare Connected !

During a disaster, health care facilities must work hand in hand with other organizations

- Local and state emergency management agencies
- Law enforcement agencies
- Fire departments
- Relief agencies
- Local and state health departments
- Federal agencies

The Incident Command Center organizes the hospital response to disasters and responds with our partners in a seamless, coordinated fashion

Potential Hospital Emergencies

- Hazardous Materials
- Fire
- Electrical Hazards
- Utility Failure
 - Water
 - Electrical
 - Translogic
- Safety/ Violence



Hazardous Materials / SDS

- Safety Data Sheets - Available for each hazardous substance
 - Hotline on each phone: Call 1-800-451-8346 for information on how to use, handle, store, and what to do if exposed



Fire Emergency

Facility Alert + **Fire Alarm** + Location + Directions

Or

Facility Alert + **Fire** + Location + Activate Incident
Command

Fire Plans

Fire Safety Information

- ⦿ Know your Fire Extinguisher Locations
- ⦿ Maintain Egress- clear hallway of objects as you go
- ⦿ Evacuation (Primary/Secondary)- Know your area's Interim Life Safety(construction) routes for evacuation.
- ⦿ Evacuate Horizontally beyond smoke doors first then Vertically.
- ⦿ Be sure to have an accounting system for staff and patients.

Fire Response

⊙ **R Rescue**

⊙ **A...Alarm**

- Pull, dial 4000 and advise of location
- Dial 911 if a satellite facility

⊙ **C...Contain or Confine**

⊙ **E...Extinguish or Evacuate (Start with horizontal evacuation)**

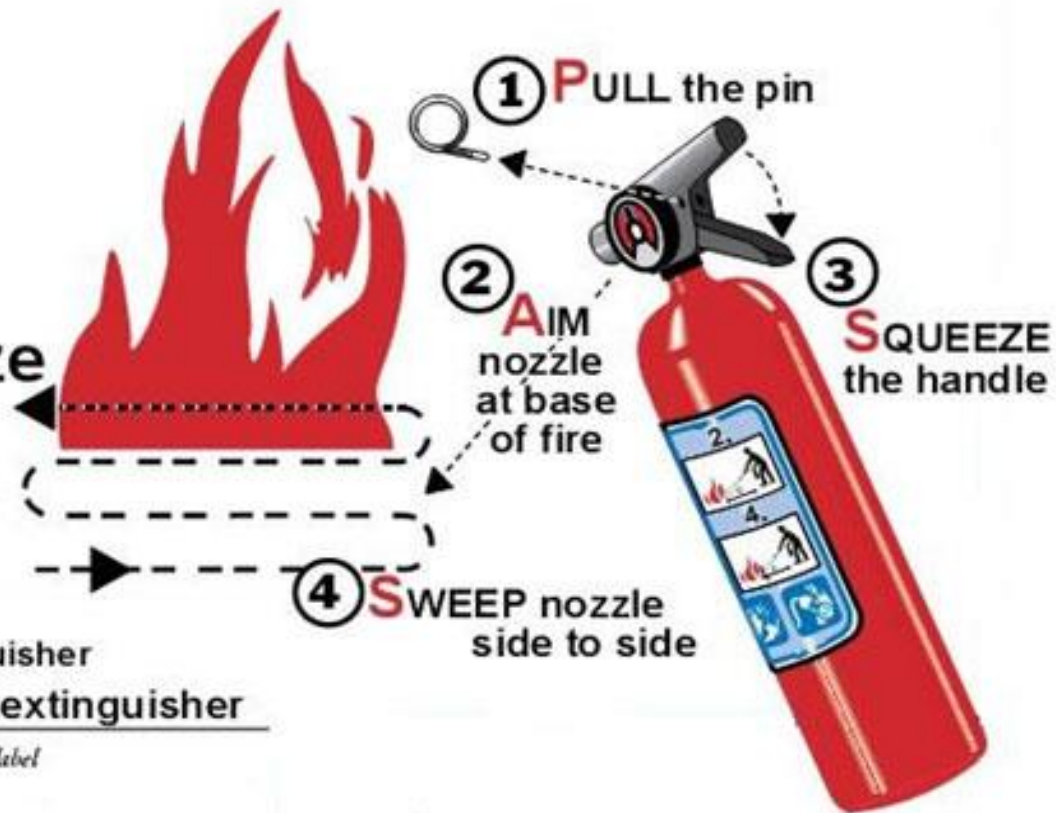
To operate an extinguisher:

Pull

Aim

Squeeze

Sweep



Know your extinguisher

Use the correct extinguisher

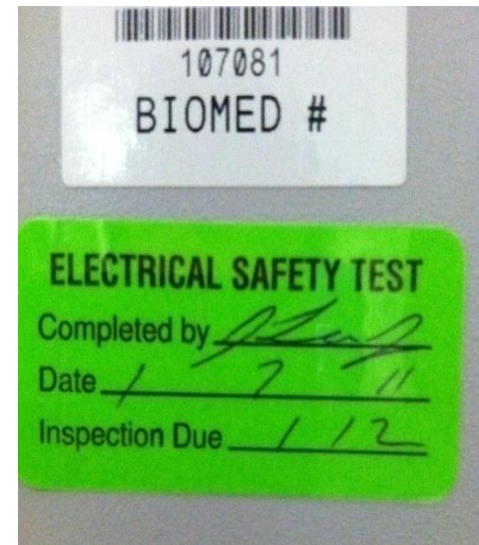
*(Check your own extinguisher's label
for detailed instructions.)*

Electrical Safety



Red outlets indicate emergency back up power. Will automatically go to generator in the event of a power failure.

Electrical equipment must be checked annually by BIOMED- always confirm sticker is in date



EMERGENCY CODES

— Facility Alerts

- Decontamination + Location + Directions
- Hazardous Material Spill/Release + Location + Directions
- External Disaster + Location + Directions
- Utility/Technology Interruption + Location + Directions
- Weather Event + Location + Directions
- Fire Alarm + Location + Directions
- Fire + Location + Activate Incident Command
- Evacuation + Location + Directions

— Security Alerts

- Active Shooter + Location + Directions
- Immediate Threat + Location + Directions
- Missing Person Description + Location + Directions
- Security Assistance + Location + Directions

Active Shooter Defined

- An active shooter is an individual actively engaged in killing or attempting to kill people in a confined and populated area.
- In most cases , active shooters use firearms and there is no pattern or method to their selection of victims.
- Active shooters response requires immediate action!!

Accept, Assess, and Act

- Accept that the emergency is occurring and respond immediately
- Assess what to do next so that you can save as many lives as possible, which depends on your location
- **Act Immediately...**



Run – Hide – Fight

- RUN: Is to IMMEDIATELY EVACUATE the area and move far away until you are in a safe location
- HIDE: Is to seek a secure place where you can hide and deny the shooter access
- FIGHT: Where your life or the lives of others are at risk, you may make the personal decision to try to attack and incapacitate the shooter to survive

Current Medical Alerts

- Rapid Response – Rapid Response + Location
- Fall Huddle – Fall Huddle + Location
- Adult Cardiac or Respiratory Arrest – Code Blue + Location
- Child Cardiac or Respiratory Arrest – Code 99 + Location
- Trauma – Trauma Alert + Level

Emergency Codes attempt to use common terminology without radio codes, acronyms and jargon to provide efficient communication.

Emergency Response Plans

What number do I call for help?

- Within the hospital, for all emergencies: 4000
- Outside of the facility, call 911